

## 8-PORT DESKTOP SWITCH with 4 PoE PORTS

Ultra-quiet, compact design for home and office use

No special networking cables required

Quick, simple Plug-and-Play installation



The D-Link® 8-Port Desktop Switch with 4 PoE Ports (DES-1008PA) enables both home and office users to easily connect and supply power to Power over Ethernet (PoE) devices such as wireless Access Points (APs), IP cameras, and IP phones while adding more Ethernet devices like computers, printers, and Network Attached Storage (NAS) onto a network. Built with home and small business users in mind, this compact PoE switch operates quietly, making it ideal for use in virtually any room or office.

### POWER OVER ETHERNET IEEE 802.3af

The DES-1008PA features 4 10/100BASE-TX ports that support the IEEE 802.3af PoE protocol. Each of the 4 PoE ports can supply up to 15.4 Watts, a total PoE budget of 52 Watts, allowing users to attach an IEEE 802.3af-compliant device to the DES-1008PA without requiring additional power. Use PoE for applications that are far from power outlets or when you want to minimize the clutter of extra cables.

### SUPERIOR PERFORMANCE

No configuration is required and installation is quick and easy. Support for Auto-MDI/MDI-X on all ports eliminates the need for crossover cables for connection to another switch or hub. Auto-Negotiation on each port senses the link speed of a network device (either 10 or 100) and intelligently adjusts for compatibility and optimal performance. The switch has been designed without fans so you can be sure of quiet operation wherever it is installed. The DES-1008PA also features diagnostic LEDs, which display status and activity, allowing you to quickly detect and correct problems on the network. With wire-speed filtering and store-and-forward switching, the DES-1008PA also maximizes network performance while minimizing the transmission of bad network packets.

Combining the convenience of PoE, superior performance, and ease of use, the D-Link 8-Port Desktop Switch with 4 PoE Ports (DES-1008PA) is the ideal choice for adding PoE devices to both a home or small business network.

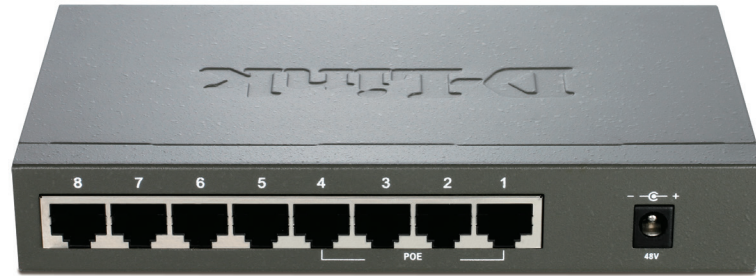
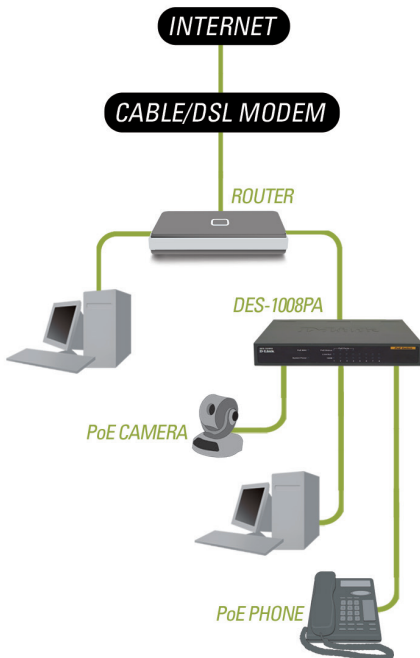
#### WHAT THIS PRODUCT DOES

The D-Link DES-1008PA is an 8-Port 10/100Mbps Ethernet Switch with four PoE Ports that can provide power to PoE-enabled devices such as wireless Access Points (APs), IP phones, and IP cameras. You can also add other Ethernet devices like computers, printers, and Network Attached Storage (NAS) onto your network. This device runs ultra-quiet, making it ideal for both home and small office use.

#### HASSLE-FREE SETUP

The D-Link 8-Port Desktop Switch with 4 PoE Ports is a Plug-and-Play device that requires no configuration, so setup is simple and hassle-free. But we know that setting up your switch is only the beginning; you may want to connect multiple computers, share files, music, and video across your home or small office network, or even create a multi-player gaming environment. That's why D-Link provides a support website to answer all of your questions and help you get the most out of your network. Find answers to frequently asked questions, download product updates, and easily access the friendly D-Link Customer Support Team.

#### YOUR NETWORK SETUP



#### TECHNICAL SPECIFICATIONS

##### PRODUCT/PERFORMANCE SPECIFICATIONS

- + MAC Address Table: 1K
- + Switch Fabric: 1.6Gbps
- + Transmission Method: Store-and-forward
- + Packet Buffer Memory: 96KB

##### DIAGNOSTIC LEDS

- + Per Unit: Power / PoE Max
- + Per Port: Activity / Link & Speed
- + PoE port: Power / Status

##### INTERFACE OPTIONS

- RJ-45: 10BASE-T, 100BASE-TX

##### NETWORK PROTOCOL AND STANDARDS

- IEEE: 802.3 Ethernet, 802.3u, 802.3x Flow Control, 802.3af (Power over Data Pairs)

##### ELECTRICAL

- + Power Supply: 48V DC/1.25A
- + Max Power Consumption: 69 Watts maximum
- + PoE budget: Up to 15.4 Watts max per port, for Ports 1-4 Only. 52 Watts Total

##### MINIMUM SYSTEM REQUIREMENTS

- + Devices Supporting 802.3 Ethernet or 802.3u Fast Ethernet
- + CAT5 Ethernet Cable
- + RJ-45 port for Each Computer
- + CD-ROM Drive to View Product Documentation

##### PACKAGE CONTENTS

- + 8-Port Desktop Switch with 4 PoE Ports
- + Power Adapter
- + CD-ROM<sup>2</sup> with Product Documentation

##### OPERATING TEMPERATURE

- + Operating: 32° to 104°F (0° to 40°C)
- + Storage: 14° to 158°F (-10° to 70°C)

##### OPERATING HUMIDITY

- 5% ~ 90% RH, Non-condensing

##### CERTIFICATIONS

- + FCC Class B
- + CE
- + RoHS

##### DIMENSIONS (W x D x H)

- + Item: 6.8" x 3.9" x 1.1" (172mm x 98mm x 27.9mm)
- + Packaging: 10.9" x 8.0" x 2.4" (277.9mm x 204mm x 62mm)

##### WEIGHT

- + Item: 1 lb (0.5 kg)
- + Packaging: 1.4 lbs (0.6 kg)

##### WARRANTY

- + Limited Lifetime<sup>1</sup>

<sup>1</sup> Limited Lifetime Warranty available only in the USA and Canada if purchased on or after June 1, 2010. Visit [www.dlink.com](http://www.dlink.com) for warranty details.

<sup>2</sup> Latest software and documentation are available at <http://support.dlink.com>.

All references to speed are for comparison purposes only. Product specifications, size and shape are subject to change without notice, and actual product appearance may differ from that depicted herein.

©2006-2010 D-Link Corporation/D-Link Systems, Inc. All rights reserved. D-Link and the D-Link logo are registered trademarks of D-Link Corporation or its subsidiaries in the United States and other countries. Other trademarks or registered trademarks are the property of their respective owners. Visit [www.dlink.com](http://www.dlink.com) for more details.